

# EXHIBITOR INFO 2027.

**5%**  
**Early Bird  
Booking**  
BY JULY 31, 2026  
ON BOXES AND  
TEST AREAS

Dortmund Trade Fair Center  
January 26 – 27, 2027

Booking deadline:  
while availability lasts

**MFK** German  
Material Flow Congress @

**TEST CAMP**  
INTRALOGISTICS

January 26 – 27, 2027  
Messe Dortmund

## ALL INCLUSIVE

You focus on your exhibits – we take care of the rest: booth construction, highlight tours, catering, hotel recommendations, dismantling, disposal – full service at fair prices, with no hidden costs.

## CURATED FOCUSED

Quality over quantity:  
A curated selection of innovations and new products meets an audience with a clear interest in innovation and investment.

## 34. German Materialflow Congress

As a key congress for intralogistics, the German Material Flow Congress is the central meeting point for manufacturers, users, planners, and scientists – a platform for knowledge transfer, professional exchange, and active networking around the future of internal material flow.

## SPOT ON ...

Innovation and hands-on testing. TEST CAMP brings the future of intralogistics to life and is a meeting point for decision-makers, innovators, and tech experts – the alternative for everyone who is shaping the future of intralogistics.



**8**

**HIGHLIGHT TOURS**  
**LIVE-DEMOS IN THE ARENA**

The guided highlight tours are a major visitor attraction at the CAMP. They provide guests with a compact overview and offer exhibitors effective matchmaking.

# TEST CAMP

INTRALOGISTICS

## YOUR INNOVATION IN THE SPOTLIGHT: BECOME AN EXHIBITOR AT TEST CAMP INTRALOGISTICS!

1,000 participants, around 100 innovations and new developments, and top-class speakers at the German Material Flow Congress (MFK@TEST CAMP), exclusive highlight tours, a central test arena for live demos and hands-on testing, as well as dedicated special test areas – TEST CAMP brings the future of intralogistics to life. As an exhibitor, you don't just showcase products – you enable real experiences. Your and our visitors test your technologies hands-on, connect directly with your team, and provide valuable feedback. Make sure your products and solutions reach where they matter most – decision-makers, users, and industry insiders with a concrete interest in innovation and investment.

## 4 Steps to the CAMP

### Step 1: Choose your box\*

It is the basis for every exhibitor.

### Step 2: Choose your test area\*:

For test drives or other test setups, an additional area is required, or you can use the central test arena.

### Step 3: Choose your setup

package: You can choose between two variants. Additional equipment can be optionally booked in the exhibitor shop.

### Step 4: Request a quote or consultation:

<https://testcamp-intralogistics.com/en/request-quote-test-camp>



\* Sample image, booth construction may vary.

## Price List 2027

(net, valid until December 2026)

### COMPANY BOX (basis for all bookings, w x d x h)\*

Company Box XS: 9 m <sup>2</sup> (approx. 3 × 3 × 3 m)	€ 12,980
Company Box S: 12 m <sup>2</sup> (approx. 4 × 3 × 3 m, prime placement)	€ 14,980
Company Box M: 18 m <sup>2</sup> (approx. 6 × 3 × 3 m, prime placement)	€ 17,980
Company Box L: 27 m <sup>2</sup> (approx. 9 × 3 × 3 m, prime placement)	€ 18,980
TEST CAMP Starter Box (joint booth): 6 m <sup>2</sup>	€ 5,380

Custom booth dimensions upon request and subject to availability.

The setup package is mandatory. Exhibitors can choose between two variants.

Setup package Basic	€ 2,180
Setup package Standard	€ 3,280

Drive and test area next to your Company Box (price per m <sup>2</sup> )	€ 160
Use of the central Test Arena and parking areas (flat rate per booth)	€ 2,400
Live demo in the Test Arena (incl. microphone): 10 minutes	€ 980
Speaker Slot (PowerPoint) presentation in the TEST CAMP Dome (15 minutes)	€ 980

Logo on the event lanyard	€ 2,700
Coffee bike at/on the booth (required space is free of charge)	€ 5,900

Additional products and services can be booked in the exhibitor shop.

### TICKETS

Exhibitor pass	€ 126.05/person
(for booth staff only, access to TEST CAMP and the congress)	
Guest ticket for exhibitors (access to the CAMP without congress)	€ 126.05/person
Open Arena (free admission to TEST CAMP on January 27, 2027, 1:00 – 4:00 p.m.)	

## CHOOSE YOUR SETUP PACKAGE

Booth construction is standardized and carried out by the TEST CAMP organization. Two variants are available for the equipment.

### SETUP PACKAGE

#### BASIC

€ 2,180

- Setup and dismantling
- Daily highlight tours
- Social Media post
- Logo on the website
- Electricity flat rate (1 × 230 V with triple socket)
- Catering and beverages
- 1 small logo banner
- 2 exhibitor passes (all-inclusive)
- 5 guest tickets (TEST CAMP access without congress) plus voucher code for additional guest invitations
- Hall Wi-Fi

### SETUP PACKAGE

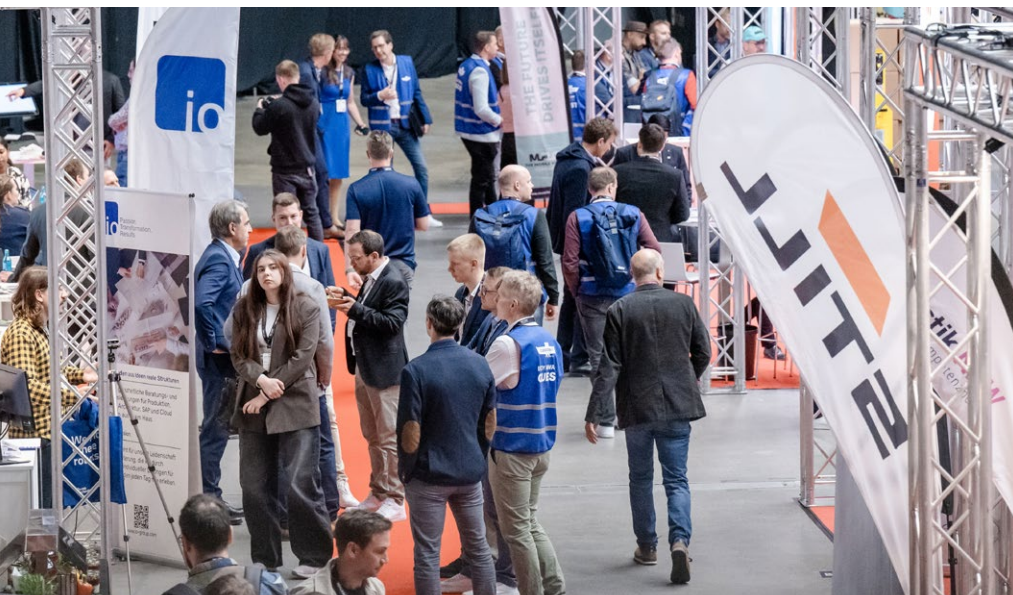
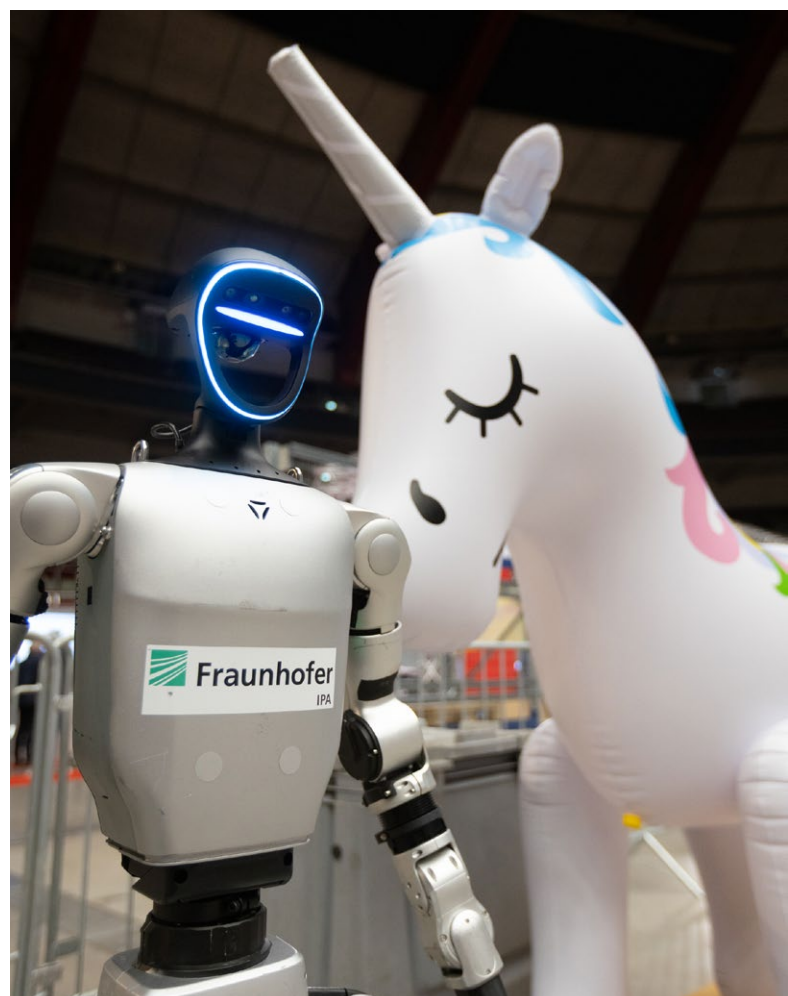
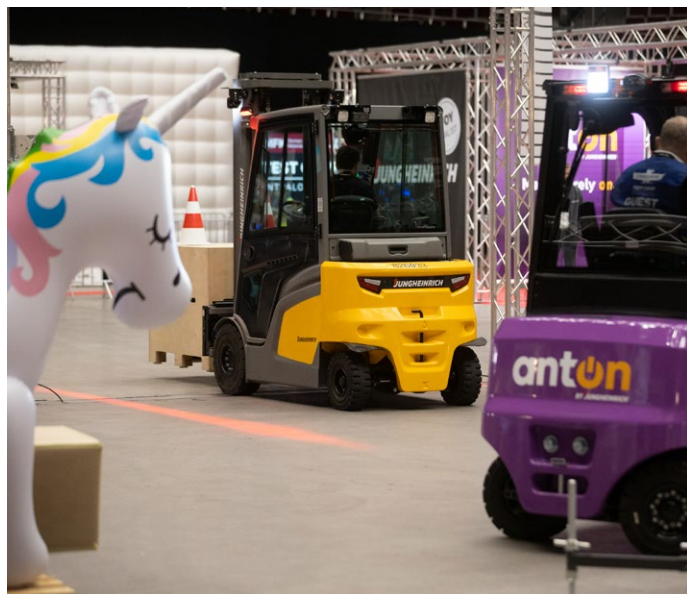
#### STANDARD

€ 3,280

- Setup and dismantling
- Daily highlight tours
- Social Media post
- Logo on the website
- Electricity flat rate (1 × 230 V with triple socket)
- LED lighting in the booth
- Catering and beverages
- 1 logo banner
- 1 high table, 4 bar stools
- 1 counter cabinet, 1 waste bin, carpet (red)
- 3 exhibitor passes (all-inclusive)
- 10 guest tickets (TEST CAMP access without congress) plus voucher code for additional guest invitations
- Hall Wi-Fi

Both setup packages include a service fee: cleaning, waste disposal, and shared use of forklifts / hall storage for 2 pallets.





# CONTACT AND GUIDANCE

Anita Würmser

TEST CAMP INTRALOGISTICS  
Eckherstraße 10 b  
D - 85737 Ismaning  
T +49 89 215 384 611  
M +49 170 416 46 00  
anita.wurmser@impact-mp.de  
testcamp-intralogistics.com